

Velocity Classic No.

MIG Gun Series



U.S. Customer Care: 800-426-1888
Canada Customer Care: 905-827-4515
International Customer Care: 940-381-1212



Velocity Classic® No. MIG Gun Series

FEATURES

- **The Industry Standard** for over 40 years
- Incorporating **Velocity™ Consumables** with new ground breaking innovation inspired by welders for welders
- **Solid Copper Conductor Path** with fewer connections for optimized electrical surface contact
- **Fewer Consumables Parts** means less complexity and lower cost of ownership
- **Gas Ported Velocity Contact Tips** stay cooler and last longer
- **Easy to Use Velocity Tips** eliminates threads and requires no tools
- **Tips can be Rotated** to prolong life requiring fewer changes
- **Excellent Wire Feed** ability with centered liner with the conduit liner fitting inside the tip
- **Superior Welding Performance** from a smoother, more stable arc
- **Large Copper to Copper** surface contact for superior thermal and electrical efficiency
- **Proven Contact Tip Life Improvements** with Short Arc Solid Wire 2 to 3 times life, Spray Transfer 4 to 5 times life and Gas Shielded Flux Core 8 to 10 times life

	Velocity Classic No. 1	Velocity Classic No. 2	Velocity Classic No. 3	Velocity Classic No. 4	Velocity Classic No. 5
Applications	Light Duty Fabrication	Medium Duty Fabrication	Med/Heavy Duty Fabrication	Med/Heavy Duty Fabrication	Heavy Duty Fabrication
Standard Options	Dual Schedule			■	
	Rear Connector	■	■	■	■
	Knucklehead™ Flexible Conductor Tube		■	■	
Output Current	180 Amps	200 Amps	300 Amps	400 Amps	500 Amps
Duty Cycle - CO₂	60%	60%	60%	60%	60%
Wire Diameter	Up to .045" (1.2 mm)	Up to .045" (1.2 mm)	Up to 1/16" (1.6 mm)	Up to 5/64" (2.0 mm)	Up to 3/32" (2.4 mm)
Process	MIG	■	■	■	■
	Aluminum	■	■	■	
	Flux Cored Gas Shielded				■
	Flux Cored Self Shielded				■

For Special MIG gun configurations, including special consumables, please contact Tech Service and Support.



Miller is a registered trademark of Illinois Tool Works, Inc. Lincoln is a registered trademark of Lincoln Electric Co. The aforementioned registered trademarks are in no way affiliated with Tueco. Tueco is registered trademark of ESAB.

Velocity Classic® No. 1 180 Amp MIG Gun



WELDING PROCESSES:
MIG (GMAW), Aluminum (GMAW)

Standard Options Include:

- Rear Connector
- Standard Conductor Tube – Part No. VA61-60 (Stock No. 1010-1105) on all guns over 15 ft (4.6)
- Conduit Liner – 42 Series

60% Duty Cycle - CO₂ Carbon Dioxide
Suitable for Light Duty Fabrication.

MIG GUNS

Tweco® Style Rear Connector

Adapter kits are available to fit Tweco rear connection to most wire feeders

Wire Size	Length	Part No.	Stock No.
Up To .035" (0.9 mm)	12 ft (3.6 m)	V112-3035	1010-1115
	15 ft (4.6 m)	V115-3035	1010-1116
	20 ft (6.1 m)	V120-3035	1010-1117
Up To .045" (1.2 mm)	12 ft (3.6 m)	V112-4045	1010-1118
	15 ft (4.6 m)	V115-4045	1010-1119
	20 ft (6.1 m)	V120-4045	1010-1120

Lincoln® Style Rear Connector

Fits Lincoln LN7, 8, 9, SP200

Wire Size	Length	Part No.	Stock No.
Up To .035" (0.9 mm)	15 ft (4.6 m)	VL115-3035	1010-1138

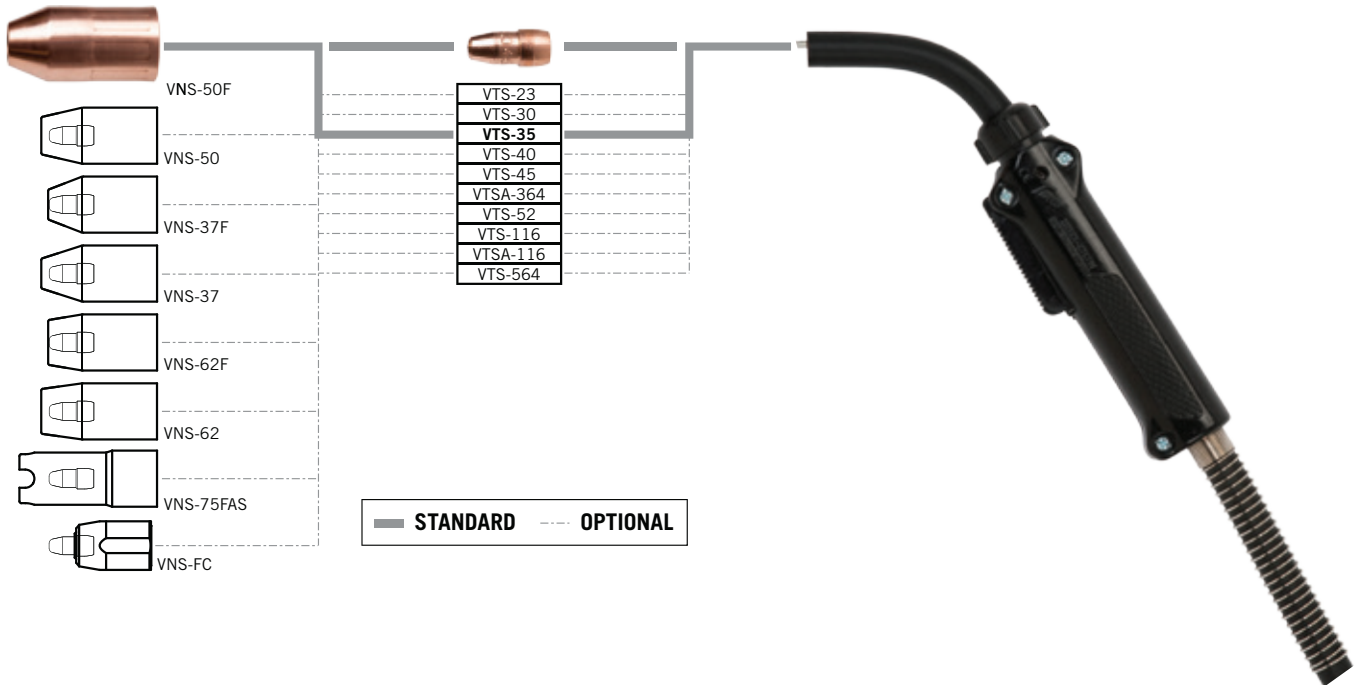
Some Lincoln wire feeders are assembled with their K1500-2 gun receiving bushing that will accept Tweco Style MIG Guns direct from the factory. Control wire Part No. MS354-DSLJ (Stock No. 2060-2137) must be ordered separately.

Miller® Style Rear Connector

Wire Size	Length	Part No.	Stock No.
Up To .035" (0.9 mm)	10 ft (3 m)	VM110-3035	1010-1125
	12 ft (3.6 m)	VM112-3035	1010-1126
	15 ft (4.6 m)	VM115-3035	1010-1127

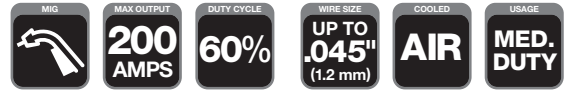
Euro-Kwik Style Rear Connector

Wire Size	Length	Part No.	Stock No.
Up To .045" (1.2 mm)	10 ft (3 m)	VX110-4045	1010-1147
	12 ft (3.6 m)	VX112-4045	1010-1148
	15 ft (4.6 m)	VX115-4045	1010-1149



Rated Output			Wire Size	Cooled	Application Usage
Amps	Duty Cycle	Gas			
180 Amps	60%	CO ₂ Carbon Dioxide	Up To .045" (1.2 mm)	Air	Light Duty Fabrication

Miller is a registered trademark of Illinois Tool Works, Inc. Lincoln is a registered trademark of Lincoln Electric Co. The aforementioned registered trademarks are in no way affiliated with Tweco. Tweco is registered trademark of ESAB.



Velocity Classic® No. 2 200 Amp MIG Gun



WELDING PROCESSES:

MIG (GMAW), Aluminum (GMAW)

Standard Options Include:

- Rear Connector and Knucklehead™ Flexible Conductor Tube
- Standard Conductor Tube – VCTL62-60 (Stock No. 1620-1371) on all guns up to 15 ft (4.6m)
- VCTL62-45 (Stock No. 1620-1372) on all guns over 15 ft (4.6)
- Conduit Liner – 42 Series

60% Duty Cycle - CO₂ Carbon Dioxide

Suitable for Medium Duty Fabrication.

MIG GUNS

Tweco® Style Rear Connector

Adapter kits are available to fit Tweco rear connection to most wire feeders

Wire Size	Length	Part No.	Stock No.
Up To .035" (0.9 mm)	10 ft (3 m)	V210-3035	1020-1105
	12 ft (3.6 m)	V212-3035	1020-1106
	15 ft (4.6 m)	V215-3035	1020-1107
	20 ft (6.1 m)	V220-3035	1020-1108
	25 ft (7.6 m)	V225-3035	1020-1109
Up To .045" (1.2 mm)	10 ft (3 m)	V210-4045	1020-1117
	15 ft (4.6 m)	V215-4045	1020-1118
	20 ft (6.1 m)	V225-4045	1020-1119

Lincoln® Style Rear Connector

Fits Lincoln LN7, 8, 9, SP200

Wire Size	Length	Part No.	Stock No.
Up To .035" (0.9 mm)	10 ft (3 m)	VL210-3035	1020-1147
	12 ft (3.6 m)	VL212-3035	1020-1148
	15 ft (4.6 m)	VL215-3035	1020-1149
	20 ft (6.1 m)	VL220-3035	1020-1150

Some Lincoln wire feeders are assembled with their K1500-2 gun receiving bushing that will accept Tweco Style MIG Guns direct from the factory. Control wire Part No. MS354-DSLJ (Stock No. 2060-2137) must be ordered separately.

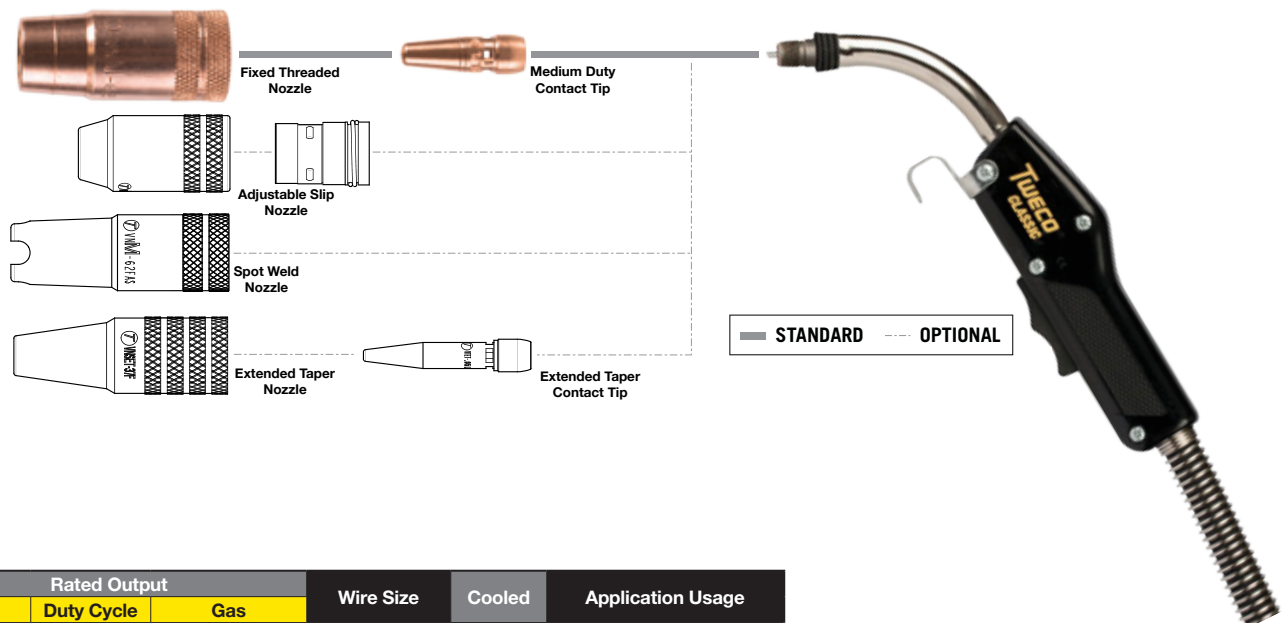
Euro-Kwik Style Rear Connector

Wire Size	Length	Part No.	Stock No.
Up To .035" (0.9 mm)	12 ft (3.6 m)	VX212-3035	1020-1305
Up To .045" (1.2 mm)	10 ft (3 m)	VX210-4045	1020-1306
	12 ft (3.6 m)	VX212-4045	1020-1307
	15 ft (4.6 m)	VX215-4045	1020-1308

Miller® Style Rear Connector

Wire Size	Length	Part No.	Stock No.
Up To .035" (0.9 mm)	10 ft (3 m)	VM210-3035	1020-1128
	12 ft (3.6 m)	VM212-3035	1020-1129
	15 ft (4.6 m)	VM215-3035	1020-1136
Up To .045" (1.2 mm)	10 ft (3 m)	VM210-4045	1020-1137
	12 ft (3.6 m)	VM212-4045	1020-1138
	15 ft (4.6 m)	VM215-4045	1020-1139

** Suffix "K4" = Knucklehead Conductor Tube – Part No. 62SFLX4-80 (Stock No. 1620-1106)



Rated Output			Wire Size	Cooled	Application Usage
Amps	Duty Cycle	Gas			
200 Amps	60%	CO ₂ Carbon Dioxide	Up To .045" (1.2 mm)	Air	Medium Duty Fabrication

Miller is a registered trademark of Illinois Tool Works, Inc. Lincoln is a registered trademark of Lincoln Electric Co. The aforementioned registered trademarks are in no way affiliated with Tweco. Tweco is registered trademark of ESAB.

Velocity Classic® No. 3 300 Amp MIG Gun

MIG GUNS



60% Duty Cycle - CO₂ Carbon Dioxide
Suitable for Medium/Heavy Duty Fabrication.

WELDING PROCESSES:
MIG (GMAW), Aluminum (GMAW)

Standard Options Include:

- Rear Connector
- Standard Conductor Tube – VCTL63-60 (Stock No. 1630-1225) on all guns up to 15 ft (4.6m)
- VCTL63-45 (Stock No. 1630-1226) on all guns over 15 ft (4.6)
- Conduit Liner – 44 Series

Tweco® Style Rear Connector

Adapter kits are available to fit Tweco rear connection to most wire feeders

Wire Size	Length	Part No.	Stock No.
Up To .045" (1.2 mm)	10 ft (3 m)	V310-3545	1030-1003
	12 ft (3.6 m)	V312-3545	1030-1004
	15 ft (4.6 m)	V315-3545	1030-1005
	20 ft (6.1 m)	V320-3545	1030-1006
	25 ft (7.6 m)	V325-3545	1030-1007
Up To 1/16" (1.6 mm)	12 ft (3.6 m)	V312-116	1030-1008
	15 ft (4.6 m)	V315-116	1030-1009
	25 ft (7.6 m)	V325-116	1030-1010

Lincoln® Style Rear Connector

Fits Lincoln LN7, 8, 9, SP200

Wire Size	Length	Part No.	Stock No.
Up To .045" (1.2 mm)	10 ft (3 m)	VL310-3545	1030-1017
	12 ft (3.6 m)	VL312-3545	1030-1018
	15 ft (4.6 m)	VL315-3545	1030-1019

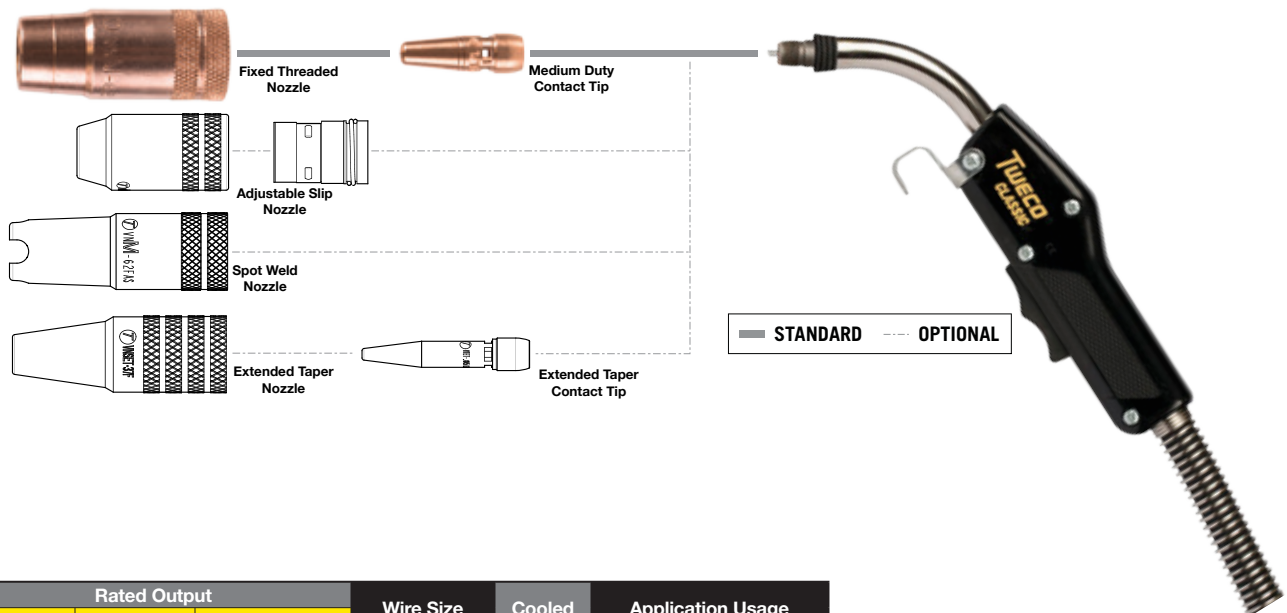
Some Lincoln wire feeders are assembled with their K1500-2 gun receiving bushing that will accept Tweco Style MIG Guns direct from the factory. Control wire Part No. MS354-DSLJ (Stock No. 2060-2137) must be ordered separately.

Euro-Kwik Style Rear Connector

Wire Size	Length	Part No.	Stock No.
Up To .045" (1.2 mm)	10 ft (3 m)	VX310-3545	1030-1020
	12 ft (3.6 m)	VX312-3545	1030-1021
	15 ft (4.6 m)	VX315-3545	1030-1022
5/64" (2.0 mm)	15 ft (4.6 m)	VX315-564	1030-1023

Miller® Style Rear Connector

Wire Size	Length	Part No.	Stock No.
Up To .045" (1.2 mm)	10 ft (3 m)	VM310-3545	1030-1013
	12 ft (3.6 m)	VM312-3545	1030-1014
	15 ft (4.6 m)	VM315-3545	1030-1015
Up To 1/16" (1.6 mm)	15 ft (4.6 m)	VM315-116	1030-1016



Rated Output			Wire Size	Cooled	Application Usage
Amps	Duty Cycle	Gas			
300 Amps	60%	CO ₂ Carbon Dioxide	Up To 1/16" (1.6 mm)	Air	Medium/Heavy Duty Fabrication

Miller is a registered trademark of Illinois Tool Works, Inc. Lincoln is a registered trademark of Lincoln Electric Co. The aforementioned registered trademarks are in no way affiliated with Tweco. Tweco is registered trademark of ESAB.



Velocity Classic® No. 4 400 Amp MIG Gun



60% Duty Cycle - CO₂ Carbon Dioxide
Suitable for Heavy Duty Fabrication.

WELDING PROCESSES:
MIG (GMAW), Flux Cored (FCAW), Aluminum (GMAW)

Standard Options Include:

- Dual Schedule On/Off Control, Rear Connector and Knucklehead™ Flexible Conductor Tube
- Standard Conductor Tube – VCTL64-60 (Stock No. 1640-1391) on all guns up to 15 ft (4.6m)
- VCTL64-45 (Stock No. 1640-1392) on all guns over 15 ft (4.6)
- Conduit Liner – 44 Series

MIG GUNS

Tweco® Style Rear Connector

Adapter kits are available to fit Tweco rear connection to most wire feeders

Wire Size	Length	Part No.	Stock No.
Up To .045" (1.2 mm)	10 ft (3 m)	V410-3545	1040-1901
	12 ft (3.6 m)	V412-3545	1040-1902
	15 ft (4.6 m)	V415-3545	1040-1903
	15 ft (4.6 m)	VDS415-3545	1040-1904
	15 ft (4.6 m)	V415-3545K4**	1040-1905
	20 ft (6.1 m)	V420-3545	1040-1906
	20 ft (6.1 m)	VDS420-3545	1040-1911
Up To 1/16" (1.6 mm)	10 ft (3 m)	V410-116	1040-1908
	12 ft (3.6 m)	V412-116	1040-1909
	15 ft (4.6 m)	V415-116	1040-1900
	20 ft (6.1 m)	VDS420-116	1040-1910
5/64" (2.0 mm)	15 ft (4.6 m)	V415-564	1040-1912

Lincoln® Style Rear Connector

Fits Lincoln LN7, 8, 9, SP200

Wire Size	Length	Part No.	Stock No.
Up To .045" (1.2 mm)	10 ft (3 m)	VL410-3545	1040-1927
	12 ft (3.6 m)	VL412-3545	1040-1928
	15 ft (4.6 m)	VL415-3545	1040-1929
Up To 1/16" (1.6 mm)	15 ft (4.6 m)	VL415-3545K4**	1040-1930
	12 ft (3.6 m)	VL412-116	1040-1931
	15 ft (4.6 m)	VL415-116	1040-1932

Some Lincoln wire feeders are assembled with their K1500-2 gun receiving bushing that will accept Tweco Style MIG Guns direct from the factory. Control wire Part No. MS354-DSLJ (Stock No. 2060-2137) must be ordered separately.

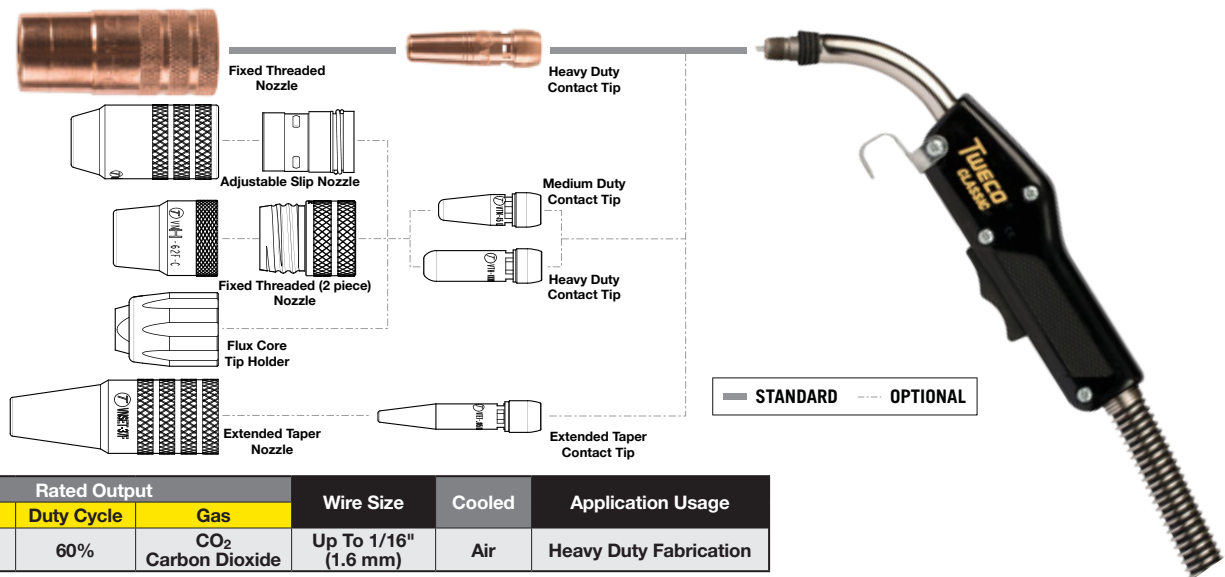
Miller® Style Rear Connector

Wire Size	Length	Part No.	Stock No.
Up To .045" (1.2 mm)	10 ft (3 m)	VM410-3545	1040-1914
	12 ft (3.6 m)	VM412-3545	1040-1915
	15 ft (4.6 m)	VM415-3545	1040-1916
	15 ft (4.6 m)	VM415-3545K4**	1040-1917
	20 ft (6.1 m)	VM420-3545	1040-1918
Up To 1/16" (1.6 mm)	25 ft (7.6 m)	VM425-3545	1040-1919
	10 ft (3 m)	VM410-116	1040-1920
	12 ft (3.6 m)	VM412-116	1040-1921
	15 ft (4.6 m)	VM415-116	1040-1922
	20 ft (6.1 m)	VM420-116	1040-1923
5/64" (2.0 mm)	25 ft (7.6 m)	VM425-116	1040-1924
5/64" (2.0 mm)	15 ft (4.6 m)	VM415-564	1040-1925

Euro-Kwik Style Rear Connector

Wire Size	Length	Part No.	Stock No.
Up To .045" (1.2 mm)	10 ft (3 m)	VX410-3545	1040-1934
	12 ft (3.6 m)	VX412-3545	1040-1935
	15 ft (4.6 m)	VX415-3545	1040-1936
	25 ft (7.6 m)	VX425-3545	1040-1937
Up To 1/16" (1.6 mm)	12 ft (3.6 m)	VX412-116	1040-1938
	15 ft (4.6 m)	VX415-116	1040-1939
5/64" (2.0 mm)	15 ft (4.6 m)	VX415-564	1040-1940

Suffix "K4" = Knucklehead Conductor Tube – Part No. 64SFLX4-80 (Stock No. 1640-1113);
Prefix "DS" = Dual Schedule



Rated Output			Wire Size	Cooled	Application Usage
Amps	Duty Cycle	Gas			
400 Amps	60%	CO ₂ Carbon Dioxide	Up To 1/16" (1.6 mm)	Air	Heavy Duty Fabrication

Miller is a registered trademark of Illinois Tool Works, Inc. Lincoln is a registered trademark of Lincoln Electric Co. The aforementioned registered trademarks are in no way affiliated with Tweco. Tweco is registered trademark of ESAB.

Velocity Classic® No.5 500 Amp MIG Gun

MIG GUNS



60% Duty Cycle - CO₂ Carbon Dioxide
Suitable for Heavy Duty Fabrication.

WELDING PROCESSES:
MIG (GMAW), Flux Cored (FCAW),
Aluminum (GMAW)

Standard Options Include:

- Dual Schedule On/Off Control, Locking Trigger & Rear Connector
- Standard Conductor Tube – VCTL66-60 (Stock No. 1660-1242) on all guns up to 15 ft (4.6m)
- VCTL66-45 (Stock No. 1660-1243) on all guns over 15 ft (4.6)
- Conduit Liner – 45 Series

Tweco® Style Rear Connector

Adapter kits are available to fit Tweco rear connection to most wire feeders

Wire Size	Length	Part No.	Stock No.
Up To .045" (1.2 mm)	12 ft (3.6 m)	V512-3545	1050-1084
	15 ft (4.6 m)	V515-3545	1050-1085
Up To 1/16" (1.6 mm)	15 ft (4.6 m)	V515-116	1050-1086
	25 ft (7.6 m)	V525-116	1050-1087
3/32" (2.4 mm)	10 ft (3 m)	V510-332	1050-1088
	15 ft (4.6 m)	V515-332	1050-1089

Lincoln® Style Rear Connector

Fits Lincoln LN7, 8, 9, SP200

Wire Size	Length	Part No.	Stock No.
3/32" (2.4 mm)	15 ft (4.6 m)	VL515-332	1050-1094

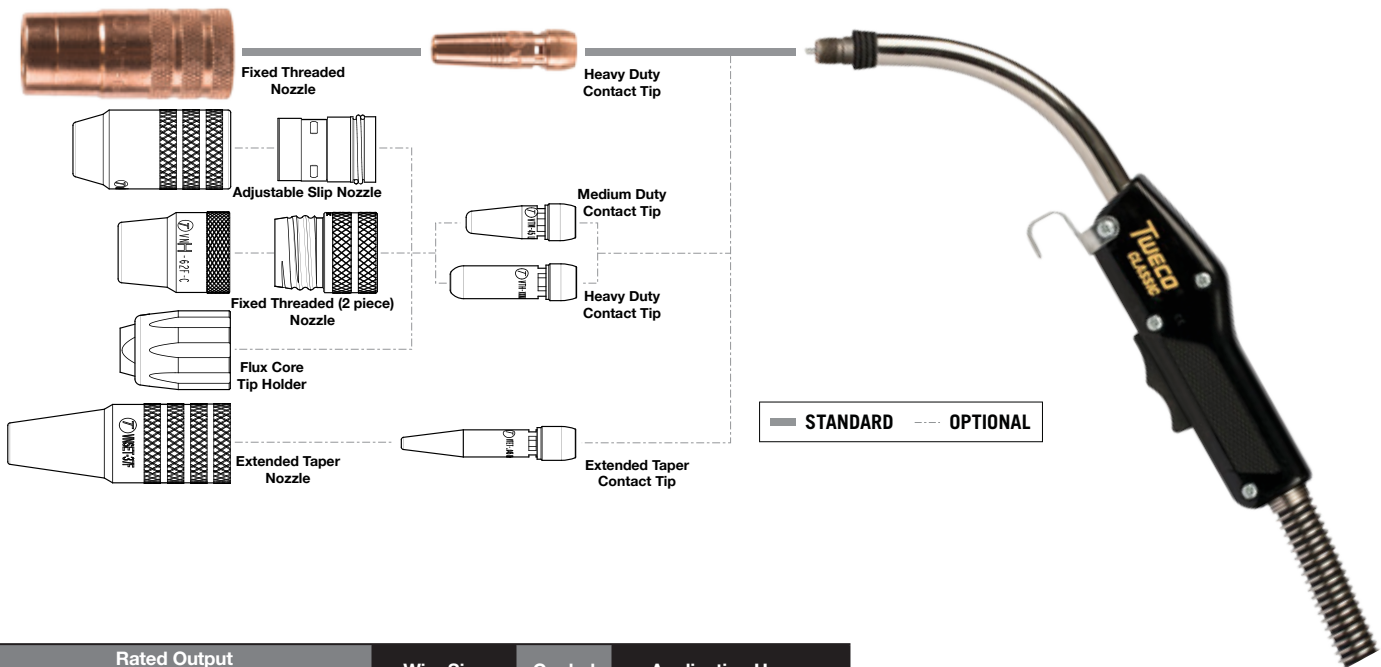
Some Lincoln wire feeders are assembled with their K1500-2 gun receiving bushing that will accept Tweco Style MIG Guns direct from the factory. Control wire Part No. MS354-DSLJ (Stock No. 2060-2137) Must be ordered separately.

Miller® Style Rear Connector

Wire Size	Length	Part No.	Stock No.
Up To 1/16" (1.6 mm)	15 ft (4.6 m)	VM515-116	1050-1091
3/32" (2.4 mm)	15 ft (4.6 m)	VM515-332	1050-1092

Euro-Kwik Style Rear Connector

Wire Size	Length	Part No.	Stock No.
Up To 1/16" (1.6 mm)	15 ft (4.6 m)	VX515-116	1050-1096



Rated Output			Wire Size	Cooled	Application Usage
Amps	Duty Cycle	Gas			
500 Amps	60%	CO ₂ Carbon Dioxide	Up To 3/32" (2.4 mm)	Air	Heavy Duty Fabrication

Miller is a registered trademark of Illinois Tool Works, Inc. Lincoln is a registered trademark of Lincoln Electric Co. The aforementioned registered trademarks are in no way affiliated with Tweco. Tweco is registered trademark of ESAB.



Mini-MIG 160 Amp MIG Gun



WELDING PROCESSES:
MIG (GMAW), Flux Cored (FCAW), Aluminum (GMAW)

Standard Options Include:

- Rear Connector and Knucklehead™ Flexible Conductor Tube
- Standard Conductor Tube – Part No. VCTS35-60-60 (Stock No. 1600-1106) on all guns
- Conduit Liner – 23 & 35 Series

60% Duty Cycle - CO₂ Carbon Dioxide
Suitable for Light Duty Fabrication.

MIG GUNS

Tweco® Style Rear Connector

Adapter kits are available to fit Tweco rear connection to most wire feeders

Wire Size	Length	Part No.	Stock No.
Up To .035" (0.9 mm)	10 ft (3 m)	V35-10	1000-1800
	12 ft (3.6 m)	V35-12	1000-1801
	15 ft (4.6 m)	V35-15	1000-1802

Miller® Style Rear Connector

Wire Size	Length	Part No.	Stock No.
Up To .035" (0.9 mm)	10 ft (3 m)	VM23-10	1000-1804
	10 ft (3 m)	VM35-10	1000-1805
	10 ft (3 m)	VHB35M-10	1000-1806
	12 ft (3.6 m)	VM35-12	1000-1807
	15 ft (4.6 m)	VM35-15	1000-1808

Lincoln® Style Rear Connector

Fits Lincoln LN7, 8, 9, SP200

Wire Size	Length	Part No.	Stock No.
Up To .035" (0.9 mm)	10 ft (3 m)	VL35-10	1000-1810
	10 ft (3 m)	VHB35L-10	1000-1811
	12 ft (3.6 m)	VL35-12	1000-1812
	15 ft (4.6 m)	VL35-15	1000-1813
	15 ft (4.6 m)	VL35-15PM*	1000-1814

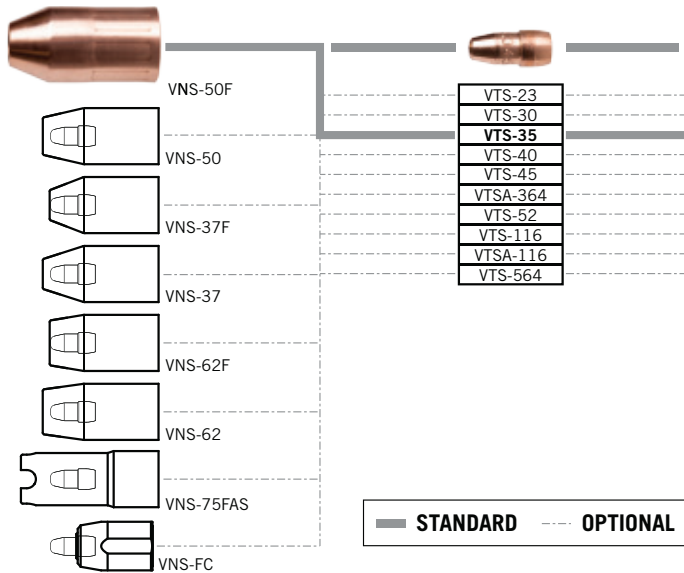
Some Lincoln wire feeders are assembled with their K1500-2 gun receiving bushing that will accept Tweco Style MIG Guns direct from the factory. Control wire Part No. MS354-DSLJ (Stock No. 2060-2137) Must be ordered separately.

*Fits Lincoln Power MIG 140/180 machines.

Euro-Kwik Style Rear Connector

Wire Size	Length	Part No.	Stock No.
Up To .035" (0.9 mm)	10 ft (3 m)	VX23-10	1000-1816
	10 ft (3 m)	VX35-10	1000-1817
	12 ft (3.6 m)	VX35-12	1000-1818
	15 ft (4.6 m)	VX35-15	1000-1819

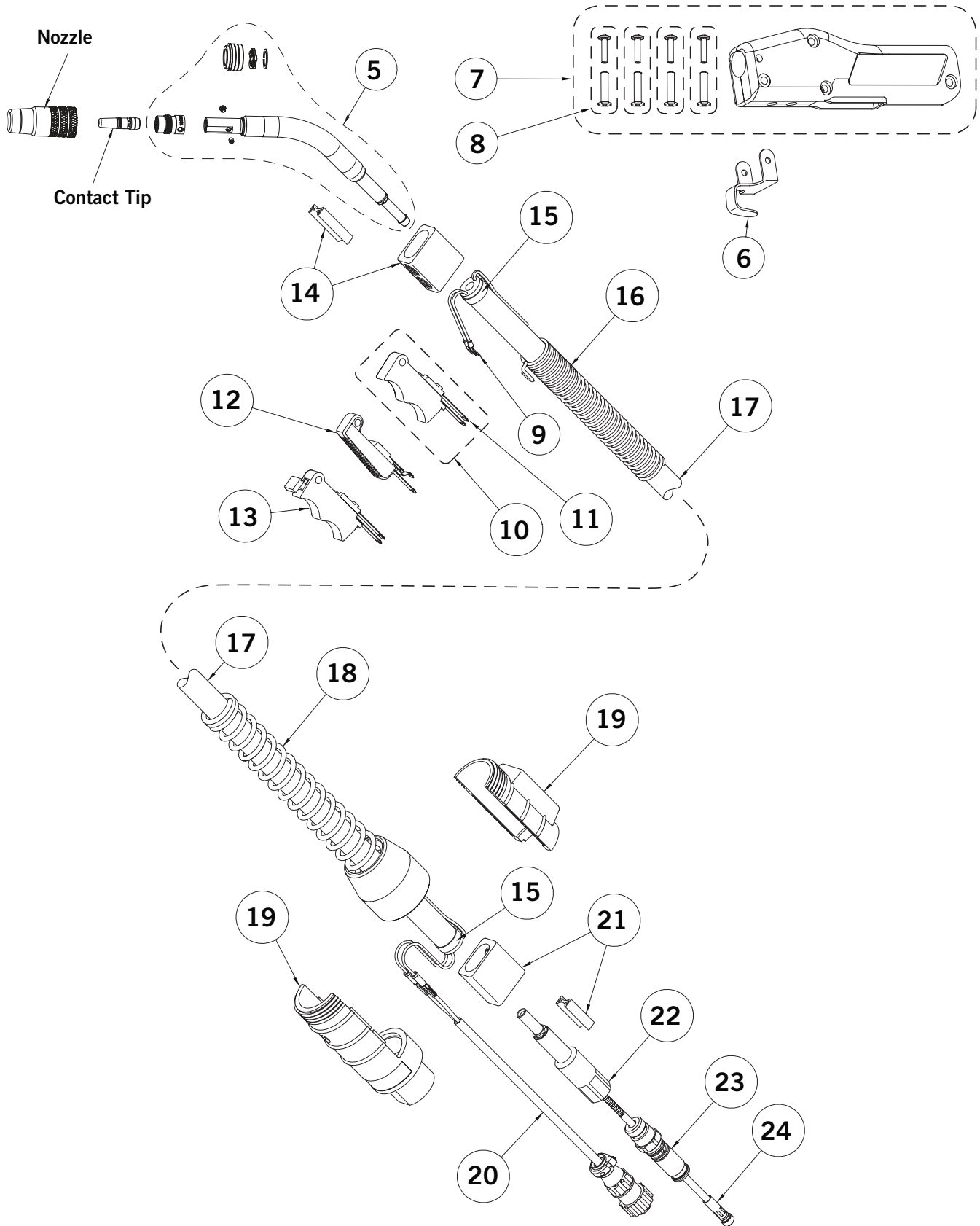
For additional information on adapter kits for other manufacturers' machines, refer to Form No. TAKL-97.



Rated Output			Wire Size	Cooled	Application Usage
Amps	Duty Cycle	Gas			
160 Amps	60%	CO ₂ Carbon Dioxide	Up To .035" (0.9 mm)	Air	Light Duty Fabrication

Miller is a registered trademark of Illinois Tool Works, Inc. Lincoln is a registered trademark of Lincoln Electric Co. The aforementioned registered trademarks are in no way affiliated with Tweco. Tweco is registered trademark of ESAB.

Velocity Classic® No. Series Replacement Parts



Velocity Classic® No. Series Replacement Parts

#	Description	Velocity Classic No. 1	Velocity Classic No. 2	Velocity Classic No. 3	Velocity Classic No. 4	Velocity Classic No. 5
		Part No./ Stock No.	Part No./ Stock No.	Part No./ Stock No.	Part No./ Stock No.	Part No./ Stock No.
5	60° Velocity Conductor Tube Assy.	VA61-60 1010-1105	VCTL6260 1620-1371	VCTL6360 1630-1225	VCTL6460 1640-1391	VCTL6660 1660-1242
	45° Velocity Conductor Tube Assy.	-	VCTL6245 1620-1372	VCTL6345 1630-1226	VCTL6445 1640-1392	VCTL6645 1660-1243
	80° Velocity Conductor Tube Assy.	-	VCTL6280 1620-1373	VCTL6380 1630-1227	VCTL6480 1640-1393	VCTL6680 1660-1241
	180° Velocity Conductor Tube Assy.	-	VCTL62180 1620-1374	VCTL63180 1630-1228	VCTL64180 1640-1394	VCTL66180 1660-1244
6	Gun Hanger	152 2020-2152	152 2020-2152	152 2020-2152	154B 2040-2156	154B 2040-2156
7	Handle (Standard)	81 2010-2081	83RC 2030-2084	83RC 2030-2084	84RC 2040-2087	85RC 2050-2088
	Handle (Dual Schedule)	-	-	-	84RC-DS 2040-2088	-
8	Binder Posts & Screws	122FM 2020-2122	122FM 2020-2122	122FM 2020-2122	124FM 2040-2124	124FM 2040-2124
9	Trigger Control Wire Terminal (Standard - 2 ea.)	244DS 2040-2245	244 2040-2244	244 2040-2244	244 2040-2244	244 2040-2244
	Trigger Control Wire Terminal (Dual Schedule - 4 ea.)	-	-	-	244LK 2040-2246	-
10	Trigger Assembly (Standard)	91 2010-2091	92RR 2020-2093	92RR 2020-2093	94RR 2040-2098	94RR 2040-2098
11	Trigger Blades	91C 2010-2093	94RC 2040-2100	94RC 2040-2100	94RC 2040-2100	94RC 2040-2100
12	Trigger Assembly (Dual Schedule)	-	-	-	94RDS 2040-2101	94RDS 2040-2101
13	Trigger Assembly (Locking)	-	-	-	94R-L 2040-2102	94R-L 2040-2102
14	Front Cable Connector	101R 2010-2103	102 2020-2102	102 2020-2102	104 2040-2104	104 2040-2104
15	Cable Clamp	136 2060-2690	136 2060-2690	136 2060-2690	136 2060-2690	136 2060-2690
16	Front Strain Relief Spring	141-6-SPR 2010-2143	142-6-SPR 2020-2144	142-6-SPR 2020-2144	144-6-SPR 2040-2146	145-6-SPR 2050-2147
17	Cablehoz® (Sold by the Foot)	200 1720-2100	200 1720-2100	300 1730-2100	400 1740-2100	500 1750-2100
18	Rear Strain Relief Spring	235RSSR 2060-2035	235RSSR 2060-2035	235RSSR 2060-2035	235RSSR 2060-2035	235RSSR 2060-2035
19	Rear Case (Direct Plug)	R6RC 2060-2040	R6RC 2060-2040	R6RC 2060-2040	R6RC 2060-2040	R6RC 2060-2040
	Rear Case (Euro)	X6RC 2060-2006	X6RC 2060-2006	X6RC 2060-2006	X6RC 2060-2006	X6RC 2060-2006

Light Duty Contact Tips

Description	Part No.	Stock No.
.023" (0.6 mm) Standard	VTS23	1110-1308
.030" (0.8 mm) Standard	VTS30	1110-1309
.035" (0.9 mm) Standard	VTS35	1110-1310
.040" (1.0 mm) Standard	VTS40	1110-1311
.045" (1.2 mm) Standard	VTS45	1110-1312
3/64" (1.2 mm) Standard*	VTSA364*	1110-1313
.052" (1.3 mm) Standard	VTS52	1110-1314
1/16" (1.6 mm) Standard	VTS116	1110-1315
1/16" (1.6 mm) Standard*	VTSA116*	1110-1317
5/64" (2.0 mm) Standard	VTS564	1110-1316
.023" (0.6 mm) Ext. Taper	VTSET23	1110-1330
.030" (0.8 mm) Ext. Taper	VTSET30	1110-1331
.035" (0.9 mm) Ext. Taper	VTSET35	1110-1332
.040" (1.0 mm) Ext. Taper	VTSET40	1110-1333
.045" (1.2 mm) Ext. Taper	VTSET45	1110-1334
3/64" (1.2 mm) Ext. Taper	VTSETA364*	1110-1335
.052" (1.3 mm) Ext. Taper	VTSET52	1110-1336
1/16" (1.6 mm) Ext. Taper	VTSET116	1110-1337
1/16" (1.6 mm) Ext. Taper	VTSETA116*	1110-1338

Medium Duty Contact Tips

Description	Part No.	Stock No.
.023" (0.6 mm)	VTM23	1160-1750
.030" (0.8 mm)	VTM30	1160-1751
.035" (0.9 mm)	VTM35	1160-1752
.040" (1.0 mm)	VTM40	1160-1753
.045" (1.2 mm)	VTM45	1160-1754
3/64" (1.2 mm)*	VTMA364*	1160-1755
.052" (1.3 mm)	VTM52	1160-1756
1/16" (1.6 mm)	VTM116	1160-1757
1/16" (1.6 mm)*	VTMA116*	1160-1758
5/64" (2.0 mm)	VTM564	1160-1759

Heavy Duty Contact Tips

Description	Part No.	Stock No.
.030" (0.8 mm)	VTH30	1160-1760
.035" (0.9 mm)	VTH35	1160-1761
.040" (1.0 mm)	VTH40	1160-1762
.045" (1.2 mm)	VTH45	1160-1763
3/64" (1.2 mm)*	VTHA364*	1160-1764
.052" (1.3 mm)	VTH52	1160-1765
1/16" (1.6 mm)	VTH116	1160-1766
1/16" (1.6 mm)*	VTHA116*	1160-1767
5/64" (2.0 mm)	VTH564	1160-1768
3/32" (2.4 mm)	VTH332	1160-1769
7/64" (2.8 mm)	VTH764	1160-1770
1/8" (3.2 mm)	VTH18	1160-1771

Extended Taper Contact Tips

Description	Part No.	Stock No.
.030" (0.8 mm)	VTET30	1160-1772
.035" (0.9 mm)	VTET35	1160-1773
.040" (1.0 mm)	VTET40	1160-1774
.045" (1.2 mm)	VTET45	1160-1775
3/64" (1.2 mm)*	VTETA364*	1160-1776
.052" (1.3 mm)	VTET52	1160-1777
1/16" (1.6 mm)	VTET116	1160-1778

* For Aluminum Wire

Note: All Contact Tips are packaged in quantities of ten (10) per bag.

Light Duty Nozzles *Self Insulated Nozzles.*

Description	Part No.	Stock No.
1/2" Fixed Threaded - Flush	VNS50F	1220-1200
1/2" Fixed Threaded - Recess	VNS50	1220-1201
5/8" Fixed Threaded - Flush	VNS62F	1220-1202
5/8" Fixed Threaded - Recess	VNS62	1220-1203
3/8" Fixed Threaded - Flush	VNS37F	1220-1204
3/8" Fixed Threaded - Recess	VNS37	1220-1206
1/2" Adj. Slip - Heavy Cone	VNSH50S	1220-1229
Adj. Slip - Tip Holder	VNSSINS	1340-1132
3/8" Ext. Taper Nozzle	VNSE37F	1220-1235
3/4" Spot Nozzle Assembly	VNS75FAS	1220-1205
FC Tip Holder - Insulator	VNSFCI	1220-1208

Medium Duty Nozzles *Self Insulated Nozzles.*

Description	Part No.	Stock No.
1/2" Threaded Nozzle Flush	VNM50F	1240-1856
5/8" Threaded Nozzle Recess	VNM62	1240-1854
5/8" Threaded Nozzle Flush	VNM62F	1240-1855
3/4" Threaded Nozzle Recess	VNM75	1240-1852
3/4" Threaded Nozzle Flush	VNM75F	1240-1853
1/2" Slip Nozzle	VNM50S	1240-1859
5/8" Slip Nozzle	VNM62S	1240-1860
3/4" Slip Nozzle	VNM75S	1240-1863
Slip Nozzle Base	VNS	1240-1864
1/2" Slip Nozzle Cone Only	VNM50SC	1240-1861
5/8" Slip Nozzle Cone Only	VNM62SC	1240-1862
3/4" Slip Nozzle Cone Only	VNM75SC	1240-1865
Flux Core Nozzle	VNLFC	1240-1892
5/8" Spot Nozzle	VNM62FAS	1240-1866
3/4" Spot Nozzle	VNM75FAS	1240-1868

Extended Taper Nozzle

Extended Taper Nozzle	VNET37F	1240-1897
-----------------------	---------	-----------

Heavy Duty Nozzles *Self Insulated Nozzles.*

Description	Part No.	Stock No.
5/8" Threaded Nozzle Recess	VNH62	1240-1877
5/8" Threaded Nozzle Flush	VNH62F	1240-1878
3/4" Threaded Nozzle Recess	VNH75	1240-1875
3/4" Threaded Nozzle Flush	VNH75F	1240-1876
5/8" Slip Nozzle	VNH62S	1240-1893
3/4" Slip Nozzle	VNH75S	1240-1894
Slip Nozzle Base	VNS	1240-1864
5/8" Slip Nozzle Cone Only	VNH62SC	1240-1895
3/4" Slip Nozzle Cone Only	VNH75SC	1240-1896
5/8" 2 Piece Nozzle Assembly Recess	VNH622PC	1240-1880
5/8" 2 Piece Nozzle Cone Only Recess	VNH62C	1240-1884
5/8" 2 Piece Nozzle Assembly Flush	VNH62F2PC	1240-1881
5/8" 2 Piece Nozzle Cone Only Flush	VNH62FC	1240-1885
3/4" 2 Piece Nozzle Assembly Recess	VNH752PC	1240-1882
3/4" 2 Piece Nozzle Cone Only Recess	VNH75C	1240-1886
3/4" 2 Piece Nozzle Assembly Flush	VNH75F2PC	1240-1883
3/4" 2 Piece Nozzle Cone Only Flush	VNH75FC	1240-1887

Note: All Nozzles are packaged in quantities of two (2) per bag.



ESAB / esab.com



U.S. Customer Care: 800-426-1888
Canada Customer Care: 905-827-4515
International Customer Care: 940-381-1212



64-1700/USA/English/2-2017/Note: Specifications subject to change without notice. Products may vary from those pictured.