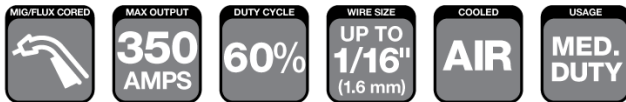


# Spray Master Series

## Spray Master® 350 AMP MIG Gun Air-Cooled



### WELDING PROCESSES:

**MIG (GMAW), Flux Cored (FCAW),  
Aluminum (GMAW)**

### Standard Options Include:

- Dual Schedule On/Off Control, Rear Connector and Knucklehead™ Flexible Conductor Tube
- Standard Conductor Tube – Part No. MS63-60 (Stock No. 1630-1189) on all guns up to 15 ft (4.6 m)
- Part No. MS63-45 (Stock No. 1630-1188) on all guns over 15 ft (4.6 m)
- Conduit Liner – 44 Series

### Industry

- Ship and Offshore Yards
- Repair and Maintenance
- Steel Industry
- Industrial and General Fabrication
- Automotive

### FEATURES

- **Extended Trigger** length (with optional mechanical locking trigger) keeps hands farther away from the arc to reduce radiated heat
- **Compact, Ergonomic Handle Design** is balanced to pivot at the center of the handle for ease of use, thereby reducing operator fatigue
- **Wide Welding Applications** both Spray Transfer Mode & Pulse Welding
- **Increased Productivity** with the use of patented, extended life Eliminator front end consumables, helps the shop floor lower usage cost
- **Split Handle Case** provides access for ease of repairs in the field
- **Durable, Metal-Jacketed, Three-Layer Conductor Tube** rotates easily for different welding positions and lowers heat in the front end
- **Heavy Duty, Thick-Walled Contact Tip and Diffuser** increases tip life, decreases downtime with fewer tip changes and improves performance in high heat applications
- **Front and Rear Steel Spring Strain Relief** provides support to the Cablehoz® coming out of the rear of the handle and minimizes wire feed issues
- **Crimped Front Cablehoz Connection** for improved electrical conductivity
- **Field Repairable** mechanical Cablehoz connections
- **Interchangeable Front End Consumables** between Tweco® Classic No. and Tweco Spray Master series

# SPRAY MASTER 350 AMP

SPECIFICATIONS	
Description	Spray Master 350
Welding Output Mixed Gas	350 A at 80%
Wire Diameter, Mild Steel	Up To 1/16" (1.6mm)
Wire Diameter, Stainless	Up To 1/16" (1.6mm)
Wire Diameter, Aluminium	Up To 1/16" (1.6mm)
Wire Diameter, Flux-cored	Up To 1/16" (1.6mm)
Certification Mark (Standards)	CE IEC 60974-7
Operating Temperature	-10 to +40 °C
Cable Length	10 ft. (3 m), 12 ft. (3.6 m), 15 ft. (4.6 m), 20 ft. (6.1 m) and 25 ft. (7.6 m)

## Tweco® Style Rear Connector

Adapter kits are available to fit Tweco rear connection to most wire feeders

Wire Size	Length	Part No.	Stock No.
Up To 1/16" (1.6 mm)	10 ft (3 m)	MS310-116	1036-1610
	12 ft (3.6 m)	MS312-116	1036-1613
	15 ft (4.6 m)	MS315-116	1036-1615
	15 ft (4.6 m)	MS315-116K4	1036-1715
	15 ft (4.6 m)	MS315-116DSRS	1036-1721

## Miller® Style Rear Connector

Wire Size	Length	Part No.	Stock No.
Up To 1/16" (1.6 mm)	10 ft (3 m)	MS310M-116	1036-1635
	12 ft (3.6 m)	MS312M-116	1036-1638
	15 ft (4.6 m)	MS315M-116	1036-1640
	15 ft (4.6 m)	MS315M-116K4	1036-1716
	15 ft (4.6 m)	MS315M-116EL	1036-1726
	25 ft (7.6 m)	MS325M-116	1036-1642

## Lincoln® Style Rear Connector

Fits Lincoln LN7, 8, 9, SP200

Wire Size	Length	Part No.	Stock No.
Up To 1/16" (1.6 mm)	15 ft (4.6 m)	MS315L-116	1036-1647
	15 ft (4.6 m)	MS315L-116K4	1036-1717
	15 ft (4.6 m)	MS315L-116EL	1036-1727

Some Lincoln wire feeders are assembled with their K1500-2 gun receiving bushing that will accept Tweco Style MIG Guns direct from the factory. Control wire Part No. MS354-DSLJ (Stock No. 2060-2137) Must be ordered separately.

## Euro-Kwik Style Rear Connector

Wire Size	Length	Part No.	Stock No.
Up To 1/16" (1.6 mm)	15 ft (4.6 m)	MS315X-116	1036-1623

Suffix "K4" = Kucklehead Conductor Tube – Part No. MS63SFLX4-80 (Stock No. 1630-1198);  
"DSRS" = Dual Schedule Rocker Switch;  
Suffix "EL" = Eliminator Front End Consumables

## Contact Tips – Standard Threaded Style

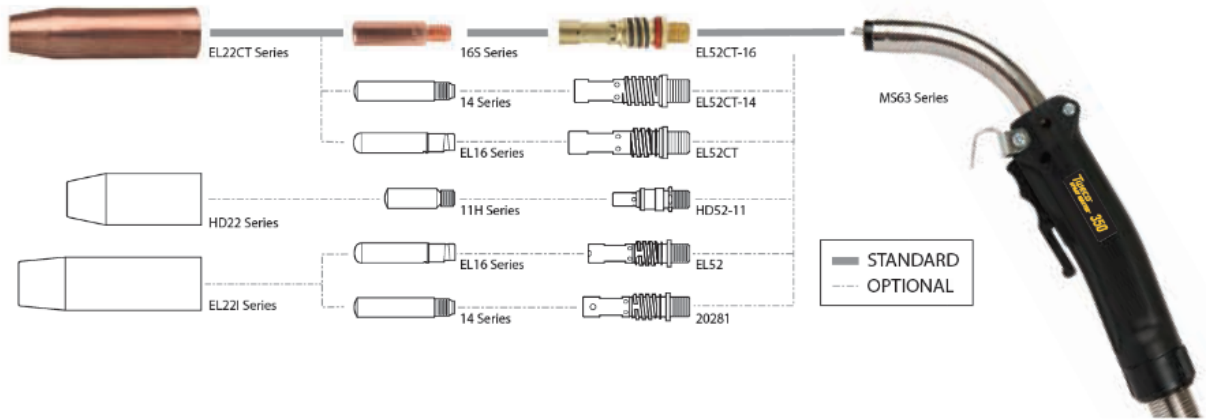
### 16S & 16ST Series

0.375" (9.5 mm) Outside Diameter –  
M8 x 1.25 Threads - 1.50" (38.1 mm) Overall Length  
25 per pack



Wire Size (in / mm)	Tip I.D. (in / mm)	Standard		Tapered	
		Part No.	Stock No.	Part No.	Stock No.
.035" (0.9 mm)	.044" (1.12 mm)	16S-35	1160-1102	16ST-35	1160-1135
.040" (1.0 mm)	.048" (1.22 mm)	16S-40	1160-1103	NA	
.045" (1.2 mm)	.054" (1.37 mm)	16S-45	1160-1104	16ST-45	1160-1137
.052" (1.3 mm)	.064" (1.65 mm)	16S-52	1160-1105	16ST-52	1160-1138
1/16" (1.6 mm)	.073" (1.85 mm)	16S-116	1160-1106	16ST-116	1160-1139
5/64" (2.0 mm)	.090" (2.29 mm)	16S-564	1160-1109	NA	
3/32" (2.4 mm)	.106" (2.67 mm)	16S-332	1160-1110	NA	
7/64" (2.8 mm)	.120" (3.05 mm)	16S-764	1160-1111	NA	
3/64" AL (1.2 mm)	.059" (1.50 mm)	16AS-364	1160-1113	NA	
1/16" AL (1.6 mm)	.082" (2.08 mm)	16AS-116	1160-1114	NA	

# SPRAY MASTER 350 AMP SERIES



## Nozzles & Nozzle Insulators – Air-Cooled

### EL22CT Series

3-Piece Nozzle Design - 0.875" (22.2 mm) Outside Diameter Self Insulated Nozzles. Use with Part No. EL52CT Series Gas Diffuser. 2 per pack



Nozzle Style	Bore Diameter	Part No.	Stock No.	Nozzle Design	Nozzle/Contact Tip Relationship
Thread-On	3/8" (9.5 mm)	EL22CT-37	1260-1625	Standard	1/8" - 5/32" (3.2 mm - 3.97 mm) Tip Recess
	3/8" (9.5 mm)	EL22CT-37F	1260-1635	Standard	Flush To 1/16" (1.6 mm) Tip Recess
	1/2" (12.7 mm)	EL22CT-50	1260-1626	Standard	1/8" - 5/32" (3.2 mm - 3.97 mm) Tip Recess
	1/2" (12.7 mm)	EL22CT-50F	1260-1636	Standard	Flush To 1/16" (1.6 mm) Tip Recess
	5/8" (15.9 mm)	EL22CT-62	1260-1627	Standard	1/8" - 5/32" (3.2 mm - 3.97 mm) Tip Recess
	5/8" (15.9 mm)	EL22CT-62F	1260-1637	Standard	Flush To 1/16" (1.6 mm) Tip Recess
	5/8" (15.9 mm)	EL22CT-62P	1260-1692	Standard	5/32" (3.97 mm) Tip Protruding
	5/8" (15.9 mm)	EL22CT-62H	1260-1629	Standard, Heavy Duty	1/8" - 5/32" (3.2 mm - 3.97 mm) Tip Recess
3/4" (19.5 mm)	EL22CT-75	1260-1628	Standard	1/8" - 5/32" (3.2 mm - 3.97 mm) Tip Recess	

## Conductor Tubes – Air-Cooled

### Spray Master® 350

Description	Part No.	Stock No.	Outer Jacket Material	Front End Threads
60 Degree with 3" (76.2 mm) Radius	MS63-60	1630-1189	Metal	I.D. M11 x 1.5-6H
45 Degree with 3" (76.2 mm) Radius	MS63-45	1630-1188	Metal	I.D. M11 x 1.5-6H
180 Degree, Straight	MS63-180	1630-1187	Metal	I.D. M11 x 1.5-6H

## Conduit Liners – For Use With Steel Welding Wires

### 300-450 Amp – Steel Wound

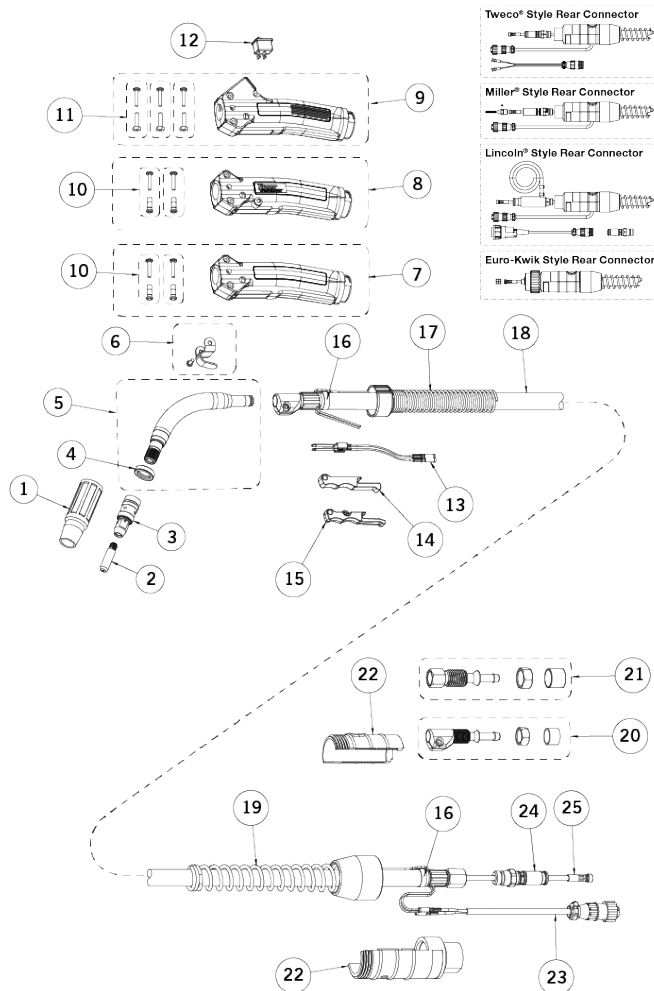
Wire Size	Length	Part No.	Stock No.
.035" - .049" (0.9 - 1.2 mm)	15 ft (4.6 m)	44-3545-15	1440-1103
.035" - .045" (0.9 - 1.2 mm)	25 ft (7.6 m)	44-3545-25	1440-1105
.052" - 1/16" 1(.3 - 1.6 mm)	15 ft (4.6 m)	44-116-15	1440-1113
.052" - 1/16" 1(.3 - 1.6 mm)	25 ft (7.6 m)	44-116-25	1440-1115
5/64" (2.0 mm)	15 ft (4.6 m)	44-564-15	1440-1123
5/64" (2.0 mm)	25 ft (7.6 m)	44-564-25	1440-1125
3/32" (2.4 mm)	15 ft (4.6 m)	44-332-15	1440-1127

## Conduit Liners – For Use With Aluminium Welding Wires

### 300-450 Amp – Nylon

Wire Size	Length	Part No.	Stock No.
.030" - 3/64" (0.8 - 1.2 mm)	15 ft (4.6 m)	44N-3545-15	1440-1003
1/16" (1.2 mm)	15 ft (4.6 m)	44N-116-15	1440-1012

# Replacement Parts



Miller is a registered trademark of Illinois Tool Works, Inc. Lincoln is a registered trademark of Lincoln Electric Co. The aforementioned registered trademarks are in no way affiliated with Tweco. Tweco is registered trademark of ESAB.

#	Description	Spray Master 350	
		Part No.	Stock No.
1	Nozzle	Refer To Page 3	
2	Contact Tip	Refer To Page 2	
3	Diffuser	EL52CT-16	1560-1107
4	Nozzle Insulator	63J-3	1630-1121
5	Conductor Tube	MS63 Series	
6	Gun Hanger	152	2020-2152
7	Handle (Standard)	MS84	2060-2130
8	Handle (Locking Trigger)	MS84LC	2060-2127
9	Handle (Dual Schedule)	MS84DSRS	2060-2128
10	Binder Posts & Screws (Standard & Locking)	ELC124FM	2060-2646
11	Binder Posts & Screws (Dual Schedule)	122FMS	2020-2123
12	Rocker Switch (Dual Schedule)	MS94RSW	2060-2694
13	Trigger Blade Assembly	ELC94-BL	2060-2671
14	Trigger (Standard)	ELC94	2060-2647
15	Trigger (Locking)	MS94LC	2060-2693
16	Cable Clamp	136	2060-2690
17	Front Strain Relief Spring & Cap	MS144	2060-2131
18	10 ft (3 m) Cablehoz® Assembly (Direct Plug)	MS310	1730-2035
	12 ft (3.6 m) Cablehoz Assembly (Direct Plug)	MS312	1730-2036
	15 ft (4.6 m) Cablehoz Assembly (Direct Plug)	MS315	1730-2037
19	Rear Strain Relief Spring & Cap	235RSSR	2060-2035
20	Front Cable Connector Repair Kit (Direct Plug & Euro)	MS104-RK	2060-2133
21	Rear Cable Connector Repair Kit (Direct Plug)	350-170HK	2035-2169
	Rear Cable Connector Repair Kit (Euro)	174X-M	2040-2181
22	Rear Case (Direct Plug)	C6RC	2060-2041
	Rear Case (Euro)	X6RC	2060-2006
23	Miller® Control Wire	MS354-DSM	2060-2140
24	Connector Plug	—	
25	Conduit Assembly	Refer To Page 3	
NS	Protective Cable Wrap, 50 ft (15.2 m) per box	TCR50	9900-1150



ESAB / esab.com

