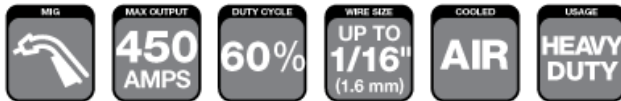


Compact Eliminator Series

450 AMP MIG Gun
Air-Cooled



WELDING PROCESSES:

MIG (GMAW), **Aluminum** (GMAW),
Flux-Cored Gas Shielded, Flux-Cored Self Shielded

Standard Options Include:

- Rear Connector
- Standard Conductor Tube –
Part No. EL64J-60 (Stock No. 1640-1137)
on all guns up to 15 ft (4.6 m)
- Part No. EL64J-45 (Stock No. 1640-1136)
on all guns up to 15 ft (4.6 m)
- Conduit Liner – 44 Series

Industry

- Ship and Offshore Yards
- Repair and Maintenance
- Steel Industry
- Industrial and General Fabrication
- Automotive

Compact Eliminator® Mig Gun Series

FEATURES

- **Operator appeal** with ergonomic handle to reduce operator fatigue and extended trigger length to reduce radiated heat to welder's gloved hand
- **Field repairable** split-half handle case provides access for ease of repair with field repairable mechanical cable connections available
- **Improved performance patented contact tip** with no threads cam style interface between contact tip & gas diffuser for increased surface contact
- **Ball & socket conductor tube design** with articulating conductor tube and three layer conductor tube construction (Copper Tube/Silicon Resin Fiberglass Insulator/Metal Jacket)
- **Wide range of welding applications** spray transfer & pulse welding modes straight CO₂ or mixed gases

COMPACT ELIMINATOR 450 AMP

SPECIFICATIONS	
Description	Compact Eliminator 450 Amp
Welding Output CO ₂ Gas	450 A at 60%
Wire Diameter, Mild Steel	Up To 1/16" (1.6mm)
Wire Diameter, Stainless	Up To 1/16" (1.6mm)
Wire Diameter, Aluminum	Up To 1/16" (1.6mm)
Wire Diameter, Flux Core	Up To 1/16" (1.6mm)
Certification Mark (Standards)	CE IEC 60974-7
Operating Temperature	-10 to +40 °C
Cable Length	10 ft. (3 m), 12 ft. (3.6 m) 15 ft. (4.6 m), 20 ft. (6.1 m) and 25 ft. (7.6 m)

Tweco® Style Rear Connector

Adapter kits are available to fit Tweco rear connection to most wire feeders

Wire Size	Length	Part No.	Stock No.
Up To .045" (1.2 mm)	12 ft (3.6 m)	ELC212-4045	1028-1108
Up To 1/16" (1.6 mm)	15 ft (4.6 m)	ELC415-116	1048-1211
	20 ft (6.1 m)	ELC420-116	1048-1216
	25 ft (7.6 m)	ELC425-116	1048-1221

Lincoln® Style Rear Connector

Wire Size	Length	Part No.	Stock No.
Up To .045" (1.2 mm)	15 ft (4.6 m)	ELC415L-3545	1028-1285
Up To 1/16" (1.6 mm)	15 ft (4.6 m)	ELC415L-1165	1048-1286

Miller® Style Rear Connector

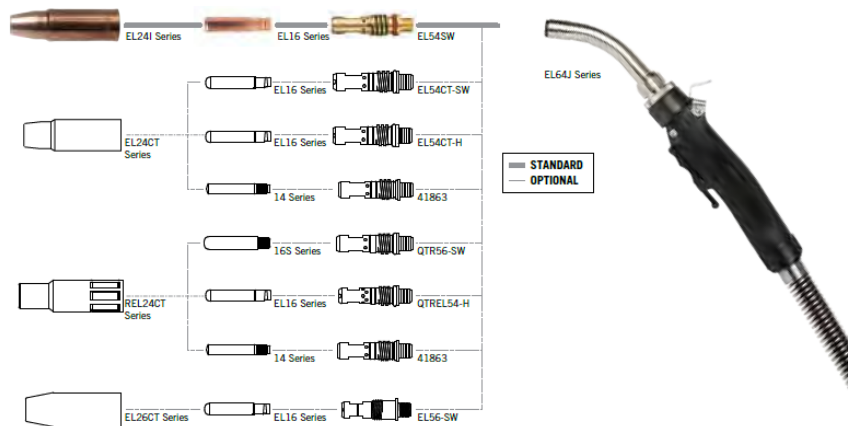
Wire Size	Length	Part No.	Stock No.
Up To .045" (1.2 mm)	10 ft (3m)	ELC410M-3545	1048-1250
	12 ft (3.6 m)	ELC412M-3545	1048-1255
	15 ft (4.6m)	ELC415M-3545	1048-1260
Up To 1/16" (1.6 mm)	15 ft (4.6 m)	ELC415M-116	1048-1261
	25 ft (7.6 m)	ELC425M-116	1048-1271

Euro-Kwik Style Rear Connector

Wire Size	Length	Part No.	Stock No.
Up To .045" (1.2 mm)	12 ft (3.6 m)	XELC412-3545	1048-1230
	15 ft (4.6 m)	XELC415-3545	1048-1235

Flexible Knucklehead™

Amp/Model	Bend Angle	EL Cons	Long Reach	Part No.	Stock No.
450	60°	■		EL62SFLX3-60	1640-1143
	80°	■		EL62SFLX4-80	1640-1144
	60°	■	■	EL62SFLX4-80LR	1640-1149



Conduit Liners – For Use With Steel Welding Wires 300-450 Amp – Steel Wound

Wire Size	Length	Part No.	Stock No.
.035" - .049" (0.9 - 1.2 mm)	15 ft (4.6 m)	44-3545-15	1440-1103
.035" - .045" (0.9 - 1.2 mm)	25 ft (7.6 m)	44-3545-25	1440-1105
.052" - 1/16" (1.3 - 1.6 mm)	15 ft (4.6 m)	44-116-15	1440-1113
.052" - 1/16" (1.3 - 1.6 mm)	25 ft (7.6 m)	44-116-25	1440-1115
5/64" (2.0 mm)	15 ft (4.6 m)	44-564-15	1440-1123
5/64" (2.0 mm)	25 ft (7.6 m)	44-564-25	1440-1125
3/32" (2.4 mm)	15 ft (4.6 m)	44-332-15	1440-1127

Conduit Liners – For Use With Aluminium Welding Wires 300-450 Amp – Teflon

Wire Size	Length	Part No.	Stock No.
.030" - 3/64" (0.8 - 1.2 mm)	15 ft (4.6 m)	44N-3545-15	1440-1003
1/16" (1.2 mm)	15 ft (4.6 m)	44N-116-15	1440-1012

COMPACT ELIMINATOR 450 AMP

Contact Tips – Eliminator Style

EL16 & EL16T Series

0.345" (6.35 mm) Outside Diameter – 1.50" (38.1 mm) Overall Length
25 per pack



Wire Size (in / mm)v	Tip I.D.	Standard		Tapered	
		Part No.	Stock No.	Part No.	Stock No.
.030" (0.8 mm)	.038" (0.97 mm)	EL16-30	1160-1610	EL16T-30	1160-1601
.035" (0.9 mm)	.044" (1.12 mm)	EL16-35	1160-1611	EL16T-35	1160-1602
.040" (1.0 mm)	.048" (1.22 mm)	EL16-40	1160-1612	EL16T-40	1160-1603
.045" (1.2 mm)	.054" (1.37 mm)	EL16-45	1160-1613	EL16T-45	1160-1604
.052" (1.3 mm)	.064" (1.65 mm)	EL16-52	1160-1615	EL16T-52	1160-1605
1/16" (1.6 mm)	.073" (1.85 mm)	EL16-116	1160-1616	EL16T-116	1160-1606
5/64" (2.0 mm)	.090" (2.29 mm)	EL-16-564	1160-1618	NA	
3/32" (2.4 mm)	.106" (2.67 mm)	EL16-332	1160-1619	NA	
3/64" AL (1.2 mm)	.059" (1.50 mm)	EL16A-364	1160-1614	EL16AT-364	1160-1607

Contact Tips – Long Life Eliminator Style

EL16RZ & EL16RZT Series

0.375" (9.5 mm) Outside Diameter –
1.50" (38.1 mm) Overall Length 25 per pack

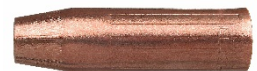


Wire Size (in / mm)v	Tip I.D.	Standard		Tapered	
		Part No.	Stock No.	Part No.	Stock No.
.035" (0.9 mm)	.041" (1.04 mm)	NA		EL16RZT-35	1160-1705
.045" (1.2 mm)	.051" (1.30 mm)	EL16RZ-45	1160-1732	EL16RZT-45	1160-1707
.052" (1.3 mm)	.058" (1.47 mm)	EL16RZ-52	1160-1733	EL16RZT-52	1160-1708

Nozzles – Eliminator Style® Air-Cooled

EL24I Series

3-Piece Nozzle Design - 0.875" (22.2 mm) Outside Diameter Self Insulated Nozzles. Use with
Part No. EL54 Series Gas Diffuser. 2 per pack



Nozzle Style	Bore Diameter	Part No.	Stock No.	Nozzle Design	Nozzle/Contact Tip Relationship
Slip-On	3/8" (9.5 mm)	EL22I-37	1260-1606	Tapered	1/8" – 5/32" (3.2 mm – 3.97 mm) Tip Recess
	1/2" (12.7 mm)	EL22I-50F	1260-1607	Tapered	1/8" – 5/32" (3.2 mm – 3.97 mm) Tip Recess
	5/8" (15.9 mm)	EL22I-50P	1260-1608	Tapered	Flush To 1/16" (1.6 mm) Tip Recess
	5/8" (15.9 mm)	EL22I-62	1260-1677	Tapered	3/8" (9.5 mm) Tip Recess
	3/4" (19.5 mm)	EL22I-75	1260-1609	Tapered	1/8" – 5/32" (3.2 mm – 3.97 mm) Tip Recess
	3/4" (19.5 mm)	EL24I-75H	1260-1632	Tapered, Heavy Duty	1/8" – 5/32" (3.2 mm – 3.97 mm) Tip Recess

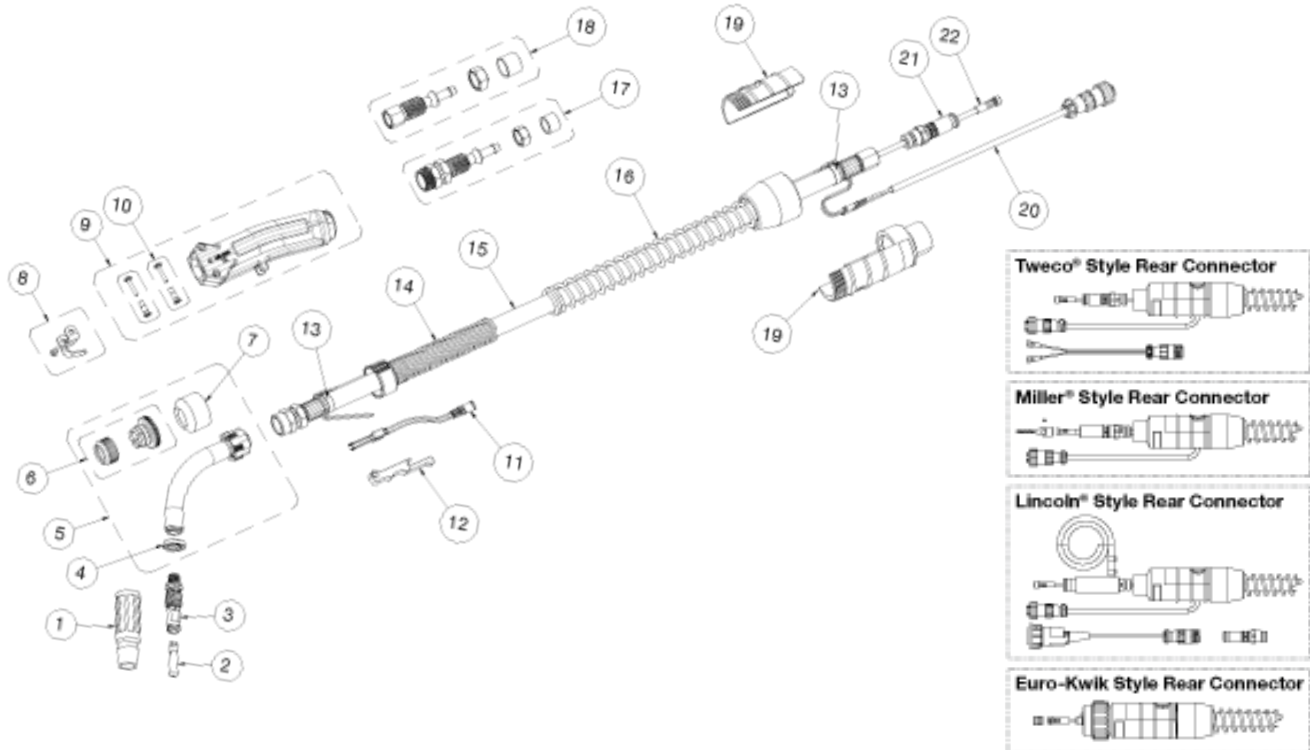
EL24CT Series

3-Piece Nozzle Design - 0.875" (22.2 mm) Outside Diameter Self Insulated Nozzles.
Use with Part No. EL52CT Series Gas Diffusers. 2 per pack



Nozzle Style	Bore Diameter	Part No.	Stock No.	Nozzle Design	Nozzle/Contact Tip Relationship
Thread-On	3/8" (9.5 mm)	EL24CT-37	1260-1625	Standard	1/8" – 5/32" (3.2 mm – 3.97 mm) Tip Recess
	1/2" (12.7 mm)	EL24CT-50	1260-1635	Standard	Flush To 1/16" (1.6mm) Tip Recess
	1/2" (12.7 mm)	EL24CT-50P	1260-1626	Standard	1/8" – 5/32" (3.97 mm) Tip Protruding
	5/8" (15.9 mm)	EL24CT-62	1260-1627	Standard	1/8" – 5/32" (3.2 mm – 3.97 mm) Tip Recess
	5/8" (15.9 mm)	EL24CT-62F	1260-1637	Standard	Flush to 1/16" (1.6 mm) Tip Recess
	5/8" (15.9 mm)	EL22CT-62P	1260-1692	Standard	3/8" (9.5 mm) Tip Recess
	5/8" (15.9 mm)	EL22CT-62H	1260-1629	Standard, Heavy Duty	1/8" – 5/32" (3.2 mm – 3.97 mm) Tip Recess
	3/4" (19.5 mm)	EL22CT-75	1260-1628	Standard	1/8" – 5/32" (3.2 mm – 3.97 mm) Tip Recess
	3/4" (19.5 mm)	EL24CT-75H	1260-1658	Standard, Heavy Duty	1/8" – 5/32" (3.2 mm – 3.97 mm) Tip Recess

Replacement Parts



#	Description	Compact 450 Amp	
		Part No.	Stock No.
1	Nozzle	Refer To Page 3	
2	Contact Tip	Refer To Page 3	
3	Diffuser	EL54-SW	1560-1114
4	Nozzle Insulator	63J-3	1630-1121
5	Conductor Tube (on all guns over 15ft (4.6m))	EL64J-45	1640-1136
	Conductor Tube (on all guns up to 15ft (4.6m))	EL64J-60	1640-1137
6	Nut Cover Ring & Sleeve	EL66-CR21	2060-2666
7	Nut Insulator	EL66-CR	2060-2667
8	Gun Hanger	152	2020-2152
9	Handle (Includes Items #10 & #12)	ELC84-H	2060-2643
10	Binder Posts & Screws (2 Required)	ELC124FM	2060-2648
11	Trigger Blade Assembly	ELC94-BL	2060-2671
12	Trigger	ELC94	2060-2647
13	Cable Clamp	136	2060-2690
14	Front Strain Relief Spring & Cap	MS144	2060-2131

#	Description	Compact 450 Amp	
		Part No.	Stock No.
15	Cablehoz Assembly, 15ft(5 m) (Direct Plug)	ELC415R	1720-2142
	Cablehoz Assembly, 15ft(5 m) (Euro)	XELC415R	1740-2532
16	Rear String Relief Spring	235RSSR	2060-2035
17	Front Cable Connector Repair Kit	ELC100-2RK	2020-2182
18	Rear Cable Connector Repair Kit (Direct Plug)	--	
	Rear Cable Connector Repair Kit (Euro)	174X-M	2040-2181
19	Rear Case (Direct Plug)	C6RC	2060-2041
	Rear Case (Euro)	X6RC	2060-2006
20	Control Wire (Direct Plug Only)	MS354-DSM	2060-2140
21	Connector Plug	Refer To Full Line Catalog	
22	Conduit Assembly	Refer To Page 2	
NS	Protective Cable Wrap, 50 ft (15.2 m) per box	TCR50	9900-1150



ESAB / esab.com

