

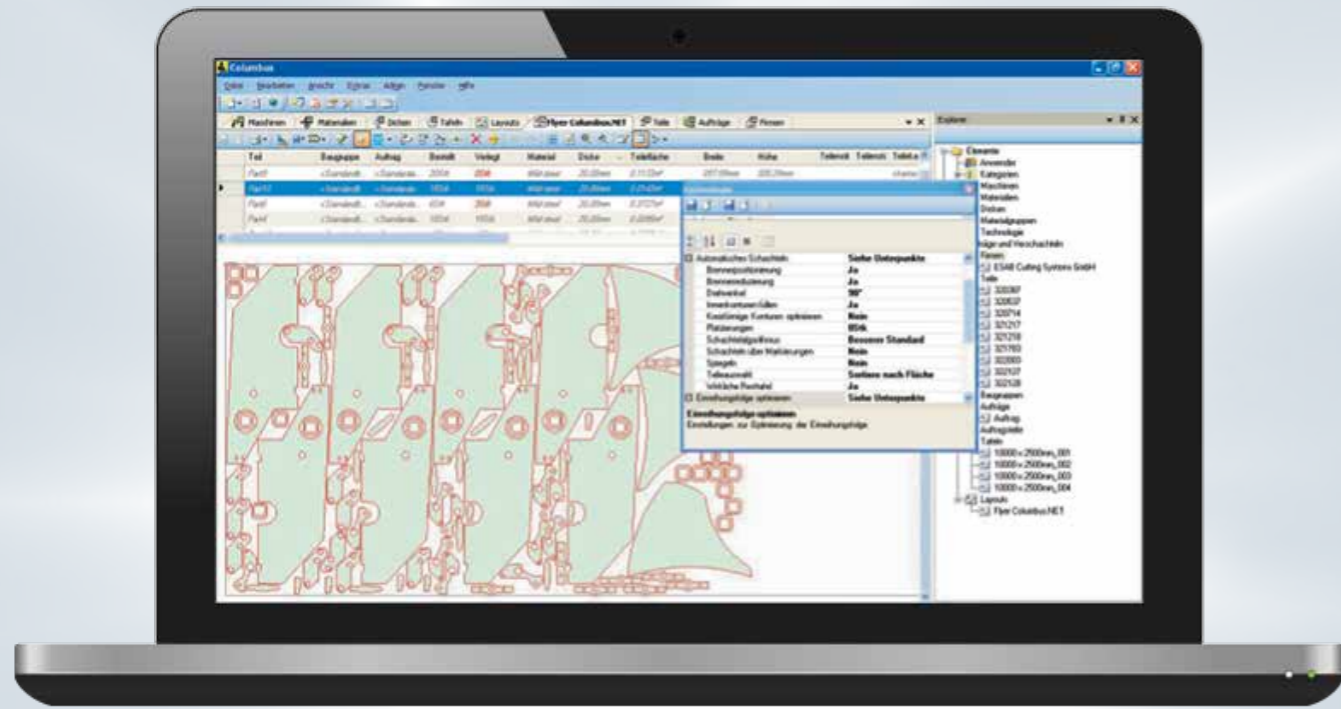
OPTIMISED CUTTING AND NESTING.



COLUMBUS[®]
CAD/CAM SOFTWARE



SOFTWARE TO MAKE THE MOST OF YOUR CUTTING SYSTEM.



Columbus® CAD/CAM Nesting Software is at the heart of cutting productivity and efficiency. More than a century of expertise in developing and manufacturing leading-edge CNC cutting systems and technology has gone into creating software that offers the most capability, the highest quality cutting results and the best user experience of any CAD/CAM nesting package available. Columbus is the first and only cutting software package developed and maintained by a cutting machine manufacturer.

STREAMLINES WORKFLOW. IMPROVES PRODUCTIVITY.

Columbus offers features to make programming easier and more efficient, improve material utilisation, improve part quality and increase productivity. It seamlessly integrates with machine, controller and cutting processes, automatically applies the latest cutting technologies for your part programs, and offers fully automated production calculations.

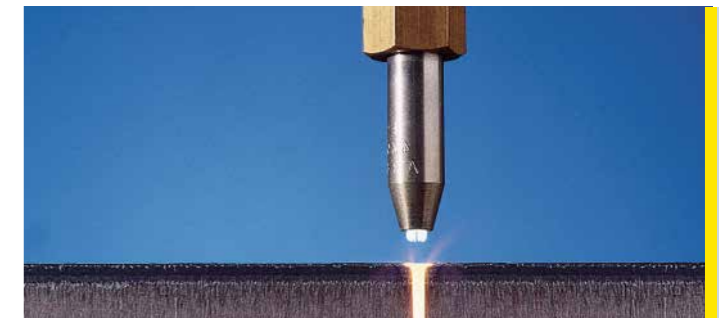
The software fully integrates with any ESAB cutting system to realise the full potential of the most advanced process technologies, including ESAB's unique Precision Hole Technology™, SmartCycle™ and SmartBevel™. Columbus is designed to handle all your cutting and nesting needs for plasma, oxy-fuel, laser, and waterjet systems. One powerful, flexible software package is all you need to support your every cutting need.

SECURE AND SCALABLE.

Columbus uses a Microsoft® SQL database as its backbone for secure data handling, performance and usability. Software updates are simple to install and ensure that Columbus keeps pace with the continually evolving technology of cutting. Open interfaces and the use of an SQL database facilitate cross-system integration in your IT structure and processes. Columbus can be installed on an individual PC workstation as well as placed on a server for multiple user access across networked workstations.



PLASMA



OXY-FUEL



WATERJET



LASER

MODULAR STRUCTURE MEETS YOUR NEEDS.

A menu-driven, easy-to-use interface provides complete control over the entire programming process. This streamlines workflow and allows you to nest faster, process orders more efficiently, and have full traceability of parts and materials.

The Layout Designer manages all functions necessary to generate a CNC program or nest for straight cutting in oxy-fuel, plasma, laser and marking processes. Standard features include common-line cutting, tabs, cutting bridges, corner loops, manual nesting and pre-piercing.

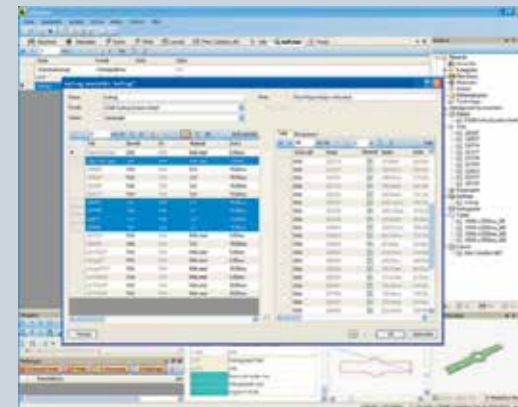
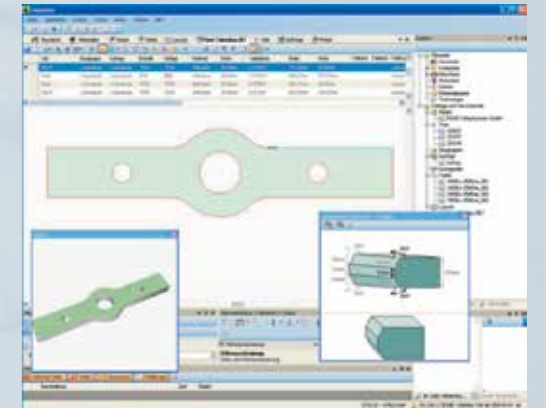
Intelligent wizards contribute to intuitive operation, allowing simple and highly complex cuts, marking and nesting jobs to be performed quickly and easily.

An intuitive Explorer screen allows viewing of all objects and data, including parts, nests, jobs, and subassemblies.

A modular structure makes Columbus highly configurable. Build on the basic foundation to suit your specific requirements now and into the future.

Bevel Cutting.

Programming of oxy-fuel, plasma, and laser bevel systems couldn't be any easier. Define bevels manually on any profile, choose from a multitude of pre-defined bevel profiles, or import bevel requirements from a Solidworks® automatically. Automatically add the right cutting technology even on multi-pass plasma cuts.

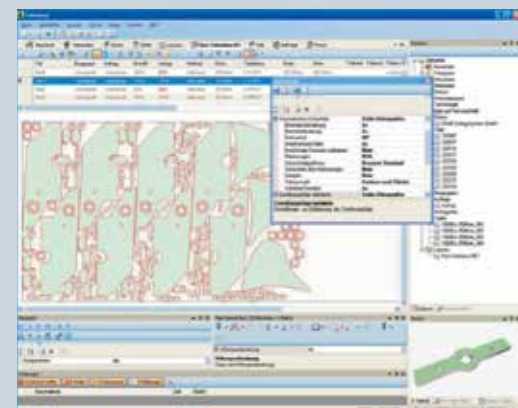


Job Control.

Efficiently keeps track of orders and required assembly/kit needs. Allows easy set up tables for jobs and subassemblies and significantly speeds processing of jobs. Part geometry and quantity are predefined, making it easy to add the entire group of parts to a nesting job.

Plate Management.

Easily manage and define all plate material, including rectangular and remnant plates. Save large inside cutouts as remnants, and make multiple remnants on the same job. Interface directly to any type of inventory control system for real time reporting.*

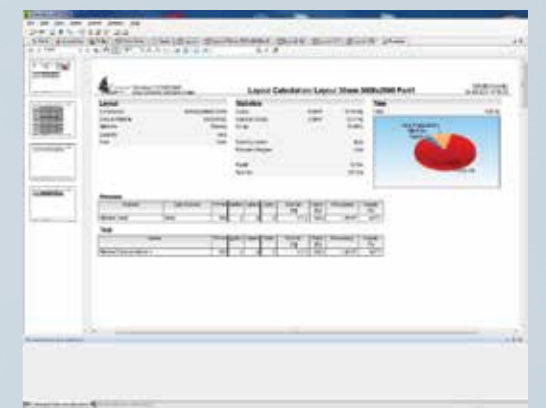


Automatic Nesting.

Fully automatic, true-shape nesting maximises plate utilisation while automatically creating nests for specific projects using any number of plates or remnants. Maximum software flexibility makes nesting as easy as possible. Columbus suggests the best plates/remnants to use when building a nest for cutting.

Production Data.

Calculation of process related production data based on parts, sheets and layouts. Calculation base and formulas can be individually configured. Production data output can be accessed at any stage giving you the planning and cost control capabilities you need.



YOUR SINGLE SOURCE.

ESAB is a leader in machine and process automation and the only total system supplier in the industry. Columbus software is engineered, developed and supported by ESAB and designed to integrate perfectly with the machine, control and cutting processes. With ESAB, you have the expertise of a leading cutting machine manufacturer and single source responsibility.

- Full-service partner relationship; no third-party relationship
- Complete control of the implementation and maintenance of components
- Repeatable and accurate results, machine to machine
- Lower cost of operation and maintenance over the lifetime of a machine

SYSTEM REQUIREMENTS.

If you want to use MS SQL Server and Columbus III on the same system, we suggest:

- Up-to-date processor (e.g. Intel i5/i7 3.00 GHz)
- RAM 4 GB (min.)
- Windows 7
- Hard disk 100 GB free
- Graphics card (1 GB) two monitors should be connectable
- 2 monitors (19 in. suggested)
- Keyboard and mouse
- USB Port (accessible)

If you want to use MS SQL Server and the licence management on a server and Columbus III on the client system, we suggest:

- Up-to-date processor (e.g. Intel i3/i5 2.50 GHz)
- RAM 2 GB (min.)
- Windows 7
- Hard disk 20 GB free
- Graphics card (1 GB) two monitors should be connectable
- 2 monitors (19 in. suggested)
- Keyboard and mouse
- USB Port (accessible by server)



UNRIVALED SERVICE AND SUPPORT.

Like all ESAB products, Columbus is backed by our commitment to superior customer service and support. Our skilled customer service department is prepared to quickly answer any questions, address problems, and help with the maintenance and upgrading of your ESAB equipment and software. We offer:

- Value packages, including machine and process audits to maximise your investment
- Proactive preventive maintenance programs and maintenance contracts to keep your equipment and software up and running
- ESAB plasma consumables for the perfect cut
- Specialised repair services
- Retrofit upgrade products and packages for the latest in machine, control, and software technology
- Complete product and process training, including advanced training programs
- All service and support is provided by ESAB-certified technicians, not contract manufacturers or third-party service providers

And, our products are backed with the most comprehensive warranty in the business. With ESAB, you can be confident that the product you purchased will meet your needs today and in the future. Ask your ESAB sales representative or distributor for a complete ESAB solution.

To learn more, visit esab.com.



ESAB / esab.com

