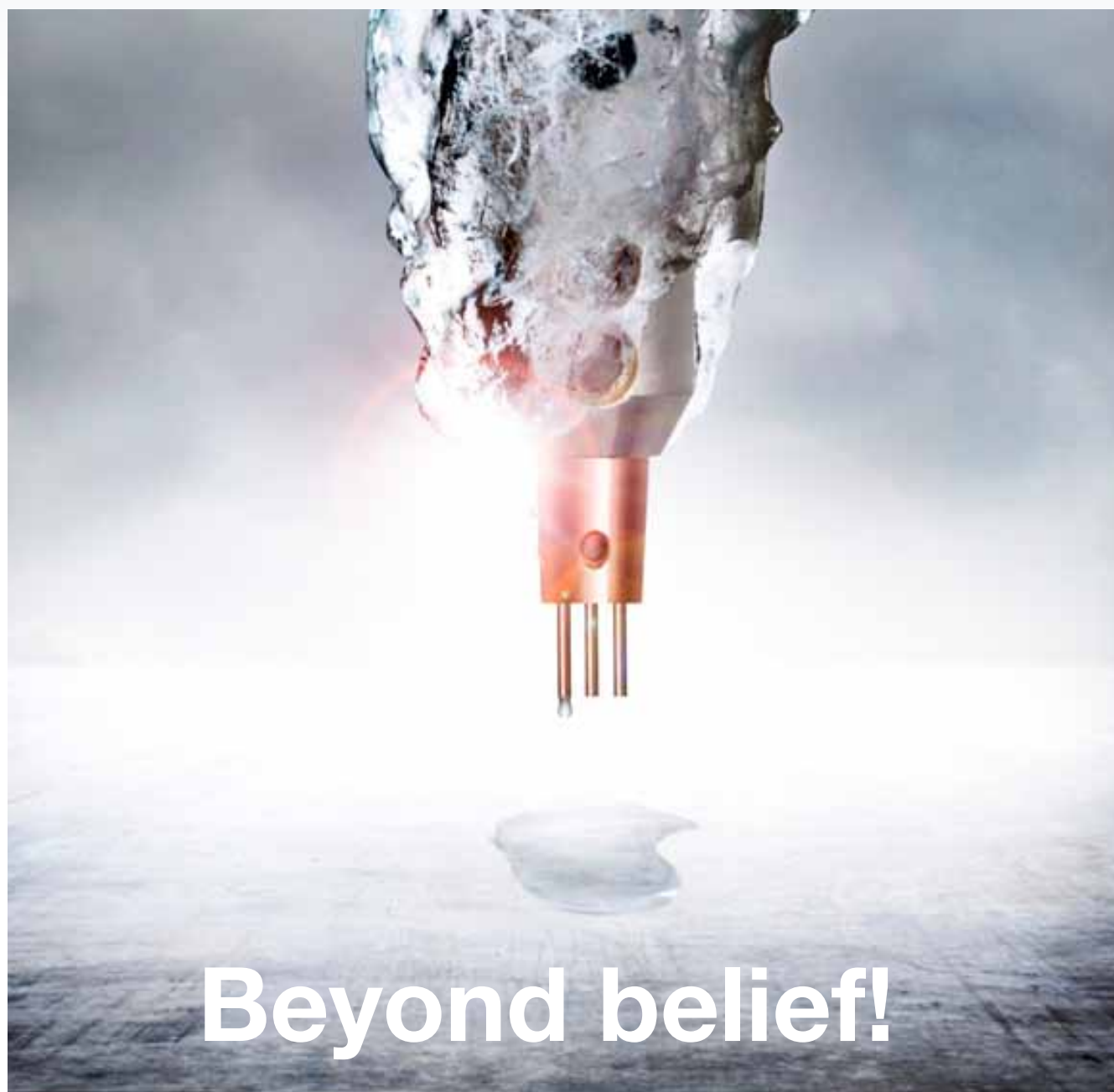




ICE™

REVOLUTIONARY SAW TECHNOLOGY FOR
ENHANCED PRODUCTIVITY



Beyond belief!

Want higher productivity?

Increased capacity and greater cost efficiency?

Is welding a critical part of your production process – and does it cause a bottleneck?

If so, ICE™ is the solution.

Want to increase capacity within your existing production footprint?

ICE™ can boost output significantly without need for expensive investment in new welding systems and extra capacity. No need for additional skilled welders.

Need to invest in new production systems?

Look no further. The combination of ESAB's ICE™ technology, welding consumables and know-how offers the optimum welding solution.

Enjoy the increased productivity from shorter production times and the most cost-efficient Submerged Arc Welding. The market is yours for the taking!

ICE™ saves energy and the environment

ICE™ reduces your energy requirement, to ensure a smaller carbon footprint, greener production and lower costs. Unlike conventional SAW methods.



Applications

Some of the many applications that can benefit from ICE™ technology are:

On-and-offshore wind tower manufacturing

Offshore fabrication

Pipe welding

General heavy fabrication

Shipbuilding

Comparison of deposition rate for ICE™ and other methods.

Deposition rate →



ICE™



Twin DC+



Single DC+

Single power-source and welding-head solutions

Deposition rate →



DC + AC ICE™



DC + Twin AC+



DC + AC

Two power-source and welding-head solutions (tandem welding)

The coolest innovation since the introduction of SAW technology. ICE™ puts excess heat to work – for greater productivity!

ICE™ technology (patent pending) is as simple as it is brilliant. ICE™ exploits the excess heat generated by the welding process to melt an additional non-powered welding electrode – the Integrated Cold Electrode. This yields significant productivity benefits without increasing heat input.

Up to 50% higher deposition rate

Submerged arc welding is already the most productive welding process. But as with any other welding process, the need to limit heat input inhibits productivity. Instead of adding more energy, ICE™ utilises the excess heat available to melt more wire. This boosts productivity by up to 50%, depending on the application.

High Deposition Root™

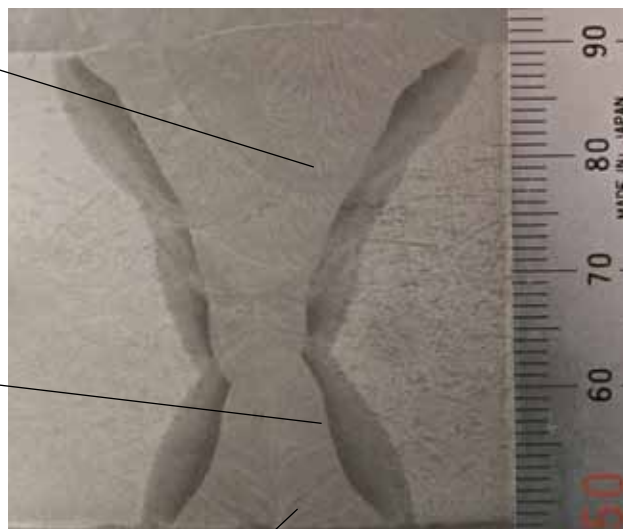
ICE™ technology enables the use of tandem welding in root passes, for improved penetration and high productivity and eliminating the need for back gouging. High Deposition Root can increase productivity up to 100% in root welding, depending on the application.

Higher welding speed

The increased deposition rate can also be utilised to increase welding speed. This can significantly improve productivity in applications where welding speed is the key to maximising productivity.

Reduced energy consumption

Welding is an energy intensive manufacturing operation. The ICE™ process enables an increase in deposition rate by up to 50%, without adding more energy. This combines environmental benefits with significantly reduced energy consumption.



Innovative Flat Cap Control™

Adjusting the ratio of "cold wire" used for cap runs makes it possible to produce a flatter cap to the weld. This increases fatigue resistance and reduces the need for post weld treatment. Just one more boost to your productivity.

Reduced flux consumption

The significant productivity improvement provided by ICE™ enables many applications to be completed with fewer runs. In this way, flux consumption can be reduced by up to 20% when welding with a 50% higher deposition rate.

Unrivaled service and support.

Every ESAB product is backed by our commitment to superior customer service and support. Our skilled customer service department is prepared to quickly answer any questions, address problems, and help with maintenance and upgrading of your machines. Our products are backed with the most comprehensive warranty in the business.

With ESAB, you can be sure that you purchased a machine that will meet your needs today and in the future. Product and process training is also available. Ask your ESAB sales representative or distributor for a complete ESAB solution.

NOTICE:

Test results described above were obtained under controlled laboratory conditions, and are not guarantees for use in the field. Actual use of the product may produce varying results due to conditions and welding techniques over which ESAB has no control, including but not limited to plate chemistry, weldment design, fabrication methods, wire size, welding procedure, service requirements and the environment. The User should confirm by qualification testing, or other appropriate means, the suitability of any welding consumable and procedure before use in the intended application.

CAUTION:

Users should be thoroughly familiar with the safety precautions referenced in the product label for the relevant product and the Safety Data Sheet for the product. Safety Data Sheets are available at www.esabna.com or by calling 1-800-ESAB-123.

STRENGTH THROUGH COOPERATION



ESAB Welding & Cutting Products / esabna.com / 1.800.ESAB.123

USA: P.O. Box 100545, 411 South Ebenezzer Road, Florence, SC 29501-0545

Canada: 6010 Tomken Road, Mississauga, Ontario L5T-1X9, 1-877-935-3226, esab.ca

Mexico: Ave. Diego Díaz de Berlanga, No. 130, Col. Nogalar San Nicolás de los Garza N.L. CP 66480 Monterrey, Mexico, (81) 8305-3700, esab.com.mx

FIND US



[facebook.com/esabna](https://www.facebook.com/esabna)



twitter.com/esabna



[youtube.com/esabweb](https://www.youtube.com/esabweb)

